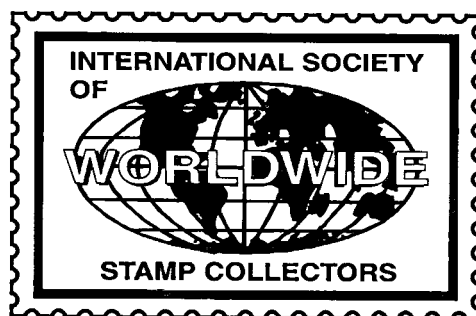


The Circuit

March/April 2006 • Volume 24 No. 2



Affiliate of: APS (#151) & ATA (#89)

www.iswsc.org

The Official Journal of the International Society of Worldwide Stamp Collectors

President's Column

by Joanne Berkowitz (#98)
ISWSC President

Greeting from your new president! I can't recall how long I've been a member of ISWSC but from my membership number (#98), it's been awhile. I have a picture of a group of us — including the first president and founder, Aubrey Dunne — at Pacific 97. With your help, this organization will continue to have many productive years.

And that gets me to "your help"... We are always looking for new ideas and volunteers. As I write this in early January, we need a replacement for Jim Gaul, who has ably run the sales circuit for many years. Ideally, this would be someone who has participated in the sales circuit and has some knowledge of how it works. If you are interested, get in touch with Jim or myself and we can fill you in on the details and time commitment.

Are you going to Washington 2006? I'll be there and would love to see as many of you as possible. The meeting date we were allotted is on the last day of the show and I will have left by then. But I am arriving on May 26th and will be in DC until June 2. Look for me at the show, leave a message at my hotel (Grand Hyatt Washington, 202-582-1234) or on the message board at the show. You can e-mail me and let me know you are coming and I'll look out for you, too. I will also be at Westpex in San Francisco and, of course, Sacapex here in my home town of Sacramento.

We are sharing a table with another group at Washington 2006 and need members to sit at the table. Can you volunteer an hour (or more) during your

time at the show? Let Terry Myers know if you can help.

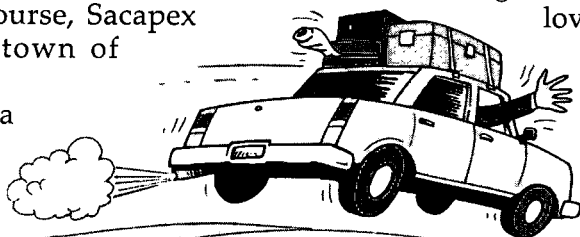
Do you belong to a local stamp club? Do your members know about us? Our best source of new members is word of mouth. Prospective members can access membership information through our web site or we will be happy to mail applications and information.

I used to belong to the swap circuits, but my collection "outgrew" the material offered. I still participate by setting aside duplicate stamps that I think would go well in the swap circuit and when I get a big enough batch, I send them to a swap circuit manager to include in the circuits. Consider doing this yourself if you have extra material that would be useful in a swap circuit.

Maybe you just have a good idea. Don't be afraid to send it along. Membership is always an issue and we often exhaust our store of ideas, so fresh ones are always appreciated. Do you correspond or trade with someone out of the country? Maybe they would be interested in joining or know of collectors who would be interested. Perhaps your foreign correspondents have a stamp club that would be willing to post our information.

Before you pick up a pen to complain that your circuits are too few or that your dues got lost, take a moment to remember that this is an entirely volunteer organization and everyone in it is doing it for the love of worldwide collecting. While we are not all professional organization people, we are all avid collectors in one way or another.

Running a "virtual" organization means each of us has to work a bit harder at staying connected. I look forward to meeting as many of you as possible at Washington 2006.



Property of

American Philatelic Research Lib

100 Match Factory Pl

Bellefonte PA 16823-1367



ISWSC BOARD MEMBERS**President:**

Joanne Berkowitz (#98)
125 43rd Street
Sacramento, CA 95819-2101 – USA
joannebe@pacbell.net

Executive Director:

Terry Myers (#736)
PMB 210
3308 Preston Road, Suite 350
Plano, TX 75903 – USA
TMyers6497@aol.com

Secretary:

Alessandro Artini (#98)
Via C. Baroni 210
I-20142 Milano – ITALY
althinkart@yahoo.com

Vice President for Charitable Services:

Richard Rizzo (#2215)
18300 Winter Park Court
Gaithersburg, MD 20879-4626 – USA
poly76ce@netscape.net

Vice President for Public Relations:

John Seidl (#1646)
4324 Granby Way
Marietta, GA 30062-8150 – USA
jseidl@mindspring.com

ISWSC Director:

Duncan Koller (#2154)
844 NE 73rd Ave.
Hillsboro, OR 97124 – USA
duncankoller@comcast.net

ISWSC Director:

Ken Wills (#2150)
5308 Shadow Glen Drive
Grapevine, TX 76051-7350 – USA
wills@airmail.net

Immediate Past President:

Randy Smith (#1111)
P.O. Box 2085
Minneapolis, MN 55402-0085 – USA
rasmay4@frontiernet.net

AUCTION MANAGER

Everett King (#1389)
P.O. Box 130
Whitethorn, CA 95589 – USA
Ph: 707-986-7230
stamps@whitethorn.com

WEBMASTER

Rick Simpson (#1703)
HC79 Box 52-E
Romney, WV 26757 – USA
Ph: 304-822-3494
rsimpson@141.com

WHATZIT COORDINATOR

Richard Barnes (#2425)
11715 - 123rd Street
Edmonton, AB T5M 0G8
CANADA
barnes@interbaun.com

SALES CIRCUIT

Manager (U.S.): James M. Gaul (#1853)
1920 Fawn Lane
Hellertown, PA 18055 – USA
terrynjim@enter.net

OMNI CIRCUIT

Manager: Jim Millette (#1314)
8901 Marcel Cadieux #207
Montreal, PQ H2M 2L9 – CANADA
jmillett@globetrotter.net

Co-Manager: David Paul (#59)
2 Heritage Drive
Belchertown, MA 01007 – USA

Co-Manager: Thomas Pomaski (#410)
8195 National Drive
Melbourne, FL 32940 – USA
stamper10@earthlink.net

Co-Manager: Dale E. Harris (#2311)
212 Schofield
Reedsport, OR 97467-1366 – USA
harrisda@ohsu.edu

SWAP CIRCUIT

Coordinator: Randy Smith (#1111)
P.O. Box 2085
Minneapolis, MN 55402-0085 – USA
rasmay4@frontiernet.net

Phone or send your questions to the appropriate volunteer. Please include a self-addressed stamped envelope or IRC for a reply.

REGIONAL REPRESENTATIVES

Represent the ISWSC, distribute stamps to youth programs in their region.

Australasia: Noel Routley (#1610)
C/- Post Office
Redesdale, 3444 – AUSTRALIA
routley@netcon.net.au

British Isles: Karen Rose (#584)
47 Heron Road — Oldbury
West Midlands B68 8AG
GREAT BRITAIN – U.K.

Canada: William Silvester (#1058)
378C Cotlow Road
Victoria, BC V9C 2G1 – CANADA
wgsilvester@shaw.ca

Large I Circuit: John McArthur (#768)
14 Stonebrook
Lawton, OK 73505-9599 – USA
jmmcarthur@earthlink.net

Large II Circuit: John Seidl (#1646)
4324 Granby Way
Marietta, GA 30062-8150 – USA
jseidl@mindspring.com

Small/Definitive Circuit:
Kenneth Wills (#2150)
5308 Shadow Glen Drive
Grapevine, TX 76051 – USA
wills@airmail.net

CTO Circuit:
William Silvester (#1058)
378C Cotlow Road
Victoria, BC V9C 2G1 – CANADA
wgsilvester@shaw.ca

Super Circuit:
Robert Armstrong (#1392)
2209 SW Oak Ridge Rd.
Palm City, FL 32990-2159 – USA
googiepox@adelphia.net

USA Circuit: Randy Smith (#1111)
P.O. Box 2085
Minneapolis, MN 55402-0085 – USA
rasmay4@frontiernet.net

Cuba: Cleto Sánchez (#1311)
P.O. Box 2222, CP-10200
Havana – CUBA

Eastern Europe: Jan Szpyrka (#539)
ul.Srebrna 29
PL-44121 Gliwice – POLAND
szpyrka@zeus.polsl.gliwice.pl

Scandinavia/Baltics:
Martti Vihanto (#830)
P.O. Box 34
FIN-20521, Turku – FINLAND

Western Europe:
LTC (ret) Alan Horwedel (#796)
Unit 30612, Box R-160
APO, AE 09154 – USA
ahorwedel@hotmail.com

STAMP ANSWERMAN

Myron Wambold (#2403)
E&M Etcetera
P.O. Box 2563
Inverness, FL 34451-2563 – USA
myronnw@tampabay.rr.com

NEWSLETTER EDITOR

Jennifer Arnold
2390 Willow Street
Lebanon, OR 97355 – USA
Ph: 541-990-9686
Fax: 541-259-4658
pizzazz@cmug.com

**DEADLINE FOR
THE NEXT
ISSUE:**

**MARCH 20,
2006**

Please remember that the Editor does not mail out The Circuit. If you have any questions about mail service of The Circuit, please contact Terry Myers. Thank you!

Join Me at Washington 2006

by Tom Fortunato (#379)

An opportunity like this comes only once a decade. It's the World Series, Super Bowl, and the Olympics all rolled into one for stamp collectors. Unless you've been on another planet for the past few years, you'll know that I'm writing about Washington 2006, the international philatelic exhibition taking place May 27 to June 3 at the Washington DC Convention Center.

Planning for an event of this magnitude begins at least 10 years before taking place. Organizers of Washington 2006 have worked tirelessly through the years to make the show a reality. All are volunteers. I consider myself somewhat of a late-comer to the W2006 team, having been asked to head up media communications in 2001, helping with the exhibition's web site, press releases and other PR functions.

Why should you consider a visit to Washington 2006? There will be something for everyone at the show. Don't believe for a minute that this is only for the "rich and famous" of our hobby!

Sure, you'll see the gems of philately; one of a kind items worth ten of millions of dollars. I can never afford them, neither probably can you, but we can all enjoy them nevertheless. Many can be found in the Court of Honor, along with items from The Royal Philatelic Collection of Her Majesty Queen Elizabeth II and other prominent collections. Others can be seen among the many frames of competitive exhibits where the world's best vie for medals, special prizes and the grand prizes. In all, over 60,000 pages of material will be on display under one roof.

How about uncovering a gem of your own? More than 200 dealers have taken out booths at the exhibition. Some are familiar names to people who attend national level shows in the U.S. Others come from the four corners of the Earth bringing material seldom seen here. Yes, they'll have expensive material with them, but you'll also find much more moderately priced items in their stock as well. Several official auctions are planned during W2006.

Don't forget that postal administrations and their agents will be in attendance selling new issues of their countries at face value. Many will be sponsoring first day ceremonies for their issues during the exhibition, including the U.S., Canada, United Nations, Israel,

Dues/Advertising Policy

Dues Information:

Single/Dealer/Club membership: \$12.00*

Youth membership (under 18): \$10.00*

Family membership (up to 4 persons in one residence): \$19.00*

*Plus 250 large commemoratives for the Youth Program or equiv. donation in US\$. Dues above are for one year and include six newsletters per year. You may sign up for three years at a time. For an application or further information send SASE or IRC to: ISWSC, PMB 210, 3308 Preston Road, Suite 350, Plano, TX 75903, USA. *There will be a \$2 per year discount if the renewal is received at least one month prior to the current expiration date.*

Advertising Policy:

For reasons of accountability, only members of the ISWSC, APS or ASDA may place ads. All ads dealing with philatelic concerns are acceptable. We reserve the right to edit out objectionable language. Advertisers are expected to respond to all inquiries, so be sure you can handle the responses before you offer to trade, buy or sell. If you have a bad result from answering an ad, contact the Editor. We will try to resolve the conflict.

Display Rates (Camera Ready*) per insertion:

Full page: \$75.00

Half page: \$40.00

Quarter page: \$20.00

Per column inch: \$5.00

Six repeat insertions of the same ad for the cost of five ads (one free). We will also offer a two-sided insertion for \$125 per issue.

*Camera Ready means ready to paste up or scan and print. Reductions and typesetting extra.

Classified Rates per insertion:

First 30 words, including name, address, and ZIP code are \$3. Additional words are 20 for \$1.

NOTE: State abbreviations = one word; "P.O. Box 1234" = two words; ZIP code = one word.

Make all checks payable to ISWSC in U.S. funds. Send text and payment for ads to the Editor. All addresses can be found on page 2.

Continued on page 4

Washington 2006

Continued from page 3

and Marshall Islands, just to name a few.

Kids should find plenty of fun things to do at Washington 2006. Two areas have been set aside for youth activities at the show.

The past comes alive in the historical Kids Zone. Join heroes of the past like Ben Franklin, Lewis and Clark, and Jamestown founders as they explain their role in America. Attend "story-telling with stamps" sessions, play Stamp Jeopardy, and read about modern-day heroes through letters written by youngsters taking part in a nationwide contest.

The U.S. Postal Service is sponsoring the Kidz Stamp Zone. Their area features computer kiosks, a 3-D exhibit depicting the "largest, fastest, loudest, longest, deepest" Wonders of America, a video explaining how stamps are made, and more.

Educational opportunities abound at Washington 2006. Nearly 80 societies covering a variety of specialties in the hobby will be

hosting seminars, lectures and membership meetings throughout the eight days of the show. This is a great way to learn about a possible new collecting interest.

The wealth of knowledge found among the pages of philatelic literature is staggering. Over 220 books, catalogs, and electronic works have been entered into competition, also vying for medals and awards. All can be viewed by the public in the literature area on the show's floor.

Washington 2006 starts on the Saturday of Memorial Day weekend and runs for eight days. What a perfect opportunity for a family getaway!

Washington, DC is an easy city to get to. It's an easy day's drive for anyone within a 250 mile radius. Three regional airports, Reagan National, Dulles

International, and Baltimore-Washington International,

offer hundreds of flights on many airlines. DC is a major hub of A m t r a k ' s national rail s y s t e m . Greyhound bus lines is another

transportation alternative to the nation's capital, with round-trip specials between Washington and New York City costing as little as \$40.

Seven hotels within a few blocks of the DC Convention Center, site of W2006, are offering discounted blocks of rooms while supplies last from \$110-\$169 per room per night. More economically priced hotels and motels can be found in the areas around the airports in the DC suburbs, which provide easy access to the Metro trains leading into the city and beyond.

Washington is home to hundreds of free museums and attractions. Heading the list are dozens of sites operated by the Smithsonian Institution. Take your pick of subjects from art, history, science, and space at museums right on The Mall itself. Don't forget the National Postal Museum

as well! All are surrounded by the many monuments and buildings familiar to people around the world; The White House, the Capitol, the Supreme Court, National Archives, Washington Monument, Jefferson Memorial, Lincoln Memorial, and others.

A mammoth event like Washington 2006 requires hundreds of volunteers before,

during and after show time to make it a success. Consider donating a few hours of your time and get an up close and personal experience in show operations. Help in the youth area, registration, administration, the library and reading room, with awards, working with computers, hospitality, and general "gophering" is all needed, as are translators. Volunteers will receive a very nice red polo shirt embroidered with the W2006 corporate logo as a souvenir while supplies last.

Breaking news about W2006 will happen right up until show time. Be among the first to know the latest information by signing up to receive email updates when press releases, updates and general news of interest is released.

Start making your travel arrangements now to attend Washington 2006! For full details, check out the exhibition's web site at <http://www.washington-2006.org>. There you'll find transportation and hotel reservation details, a complete schedule of events, listing of dealers and postal administrations, souvenir ordering form, volunteer sign up, and everything else that will convince you that this show is something not to be missed!

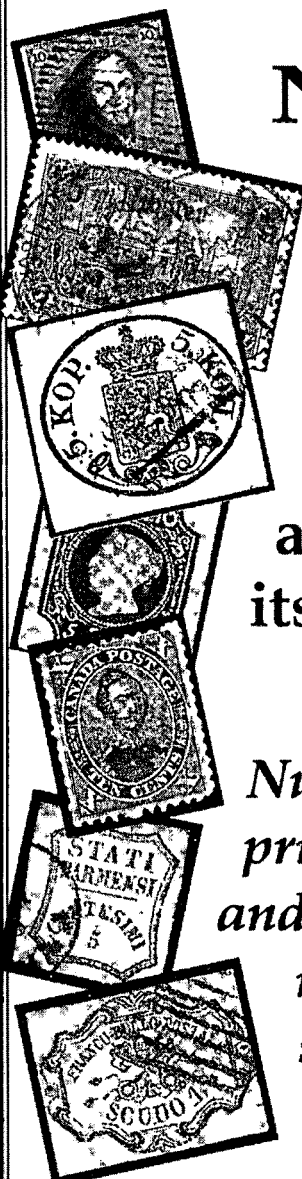
Planning on attending Washington 2006?

Contact Joanne Berkowitz with dates and times you are available to volunteer at the ISWSC table!

(See page 2 for contact info.)



Stamp Out Commission Fees!



Nutmeg Stamp Sales
recently bought an outstanding
collection from a prominent
New York City auction house.

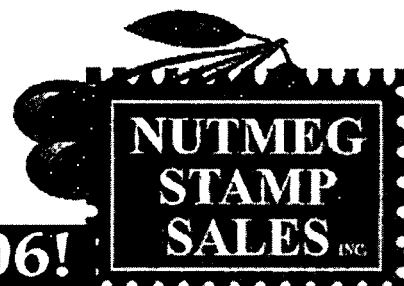
We paid less than the collection was
worth. Nutmeg got a great collection
at a great price, the auction house got
its commission. Who lost on this deal?

The collector!

*Nutmeg buys outright, negotiating the selling
price directly with the owner. You get a check
and we take the collection. We believe that life
is hard enough already without adding the
stress of waiting for payment, getting back
unsold lots and wondering just how much
you'll clear on your lifetime investment.*

Call us today at
1-800-522-1607 to discuss the
future of your collection.

Visit us at Washington 2006!



• P.O. Box 4547 Danbury CT 06813 • Fax: 203-798-7902
• Email: info@nutmegstamp.com

Swap Circuit News

by Randy Smith (#1111)
Swap Circuit Coordinator

I recently received a Large I Circuit in which **Scott Sadger** (#882) announced that he is stepping down as manager of the Large I swap circuits due to work commitments. Scott has been a manager of the Swap Circuit program for many years (at least since October 1994, according to my records). Scott always strived to improve the material in each circuit and was very popular amongst his swap circuit members for his efforts. Thank you, Scott, for your years of work and dedication to the program – you will be missed.

The current members of the Large I circuits will be reassigned to the large circuits managed by **John McArthur** (#768) and/or **John Seidl** (#1646). Because we will only have two Large circuit managers, John McArthur's circuits will be renamed from Large III circuits to Large I circuits.

The USA circuits continue to go out to members, but not at the frequency I would like. (Work, family, and other tasks tug at my time) I will continue to send the circuits out, however if anyone is interested

in taking on the manager role for the USA circuits, please contact me.

Annual swap circuit fees will be due by the time you read this article, however 2005 Super Circuit members will have the Super Circuit portion of their fees waived for 2006. (This is as an apology for my not getting the Super Circuits turned over to **Bob Armstrong** (#1392) in a timely manner.) Renewal letters have been sent to existing members (with credits noted for Super Circuit members). As a reminder, these fees are separate from the annual ISWSC membership dues. As the Swap Circuits do not receive any monies from ISWSC dues, the fees are collected to help reimburse managers for their expenses and to provide stamps for the circuits.

Not participating in the Swap Circuit program yet? Now's an excellent time to start! Just complete the Swap Circuit membership form included with this newsletter and return it to me, along with the proper fees. After that, sit back and enjoy the stamps that you'll soon be adding to your collection!

Happy Stamping!



Dhufar: An Interesting Philatelic State

by Richard Barnes (# 2425)
From the *Edmonton Stamp Club Bulletin*
(Volume 88, Number 10)

While investigating the development of postal administrations following the withdrawal of the British Postal Agencies from Eastern Arabia and the Persian Gulf, I ran into the stamps of Dhufar. Checking a map, I discovered there is a Dhufar Plateau situated in the lower southeast corner of the Arabian Peninsula. The plateau is bisected by the border between Yemen and Oman and is famous as the main source of frankincense (remember the first gifts of Christmas?).

In 1963, armed insurgency broke out in Aden. The fighting continued against the British until their withdrawal in November 1967. The withdrawal of the British did not end the fighting. In fact, the factional fighting in southern Arabia is still going on

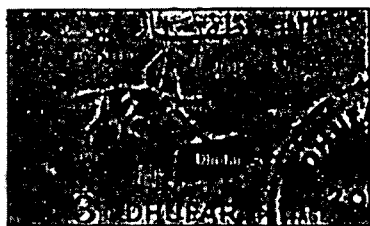
despite the "unification" of Yemen. One of the regions seeking independence during this period of turmoil was the region of Dhufar.

The Dhufar Liberation Front, supported by the

communist government of the People's Democratic Republic of Yemen, had initial successes against the troops of the Sultan of Oman. In 1968, the rebel cause in Dhufar was taken over by the Marxist-Leninists, who changed the name of their cause to the Popular Front for the Liberation of the Occupied Arabian Gulf (PFLOAG). They received support from the communist Chinese.

In the early 1970s, the British SAS and experienced Omani troops came into Dhufar,

defeating the PFLOAG. It is unclear why the rebels could not retire into Yemen and continue to make



Continued on page 11

ISWSC SWAP CIRCUIT MEMBERSHIP FORM

To join the ISWSC Swap Circuit program, please complete this form and return it with your fees to:

Randy Smith
P.O. Box 2085
Minneapolis, MN 55402 — USA

PLEASE PRINT

| | |
|-----------------------|--|
| Member #: | |
| Name: | |
| Mailing Address: | |
| | |
| | |
| | |
| E-Mail: | |
| Collecting Interests: | |
| | |
| | |

If this is a new address, please check here: ☐

| | | # CIRCUITS REQUESTED ¹ | | AMOUNT ENCLOSED | |
|------------------------|--|--|-----------------------------|-----------------|--------------------|
| | | USA/CANADA MEMBERSHIP | INTERNATIONAL MEMBERSHIP | STAMPS | MONEY ² |
| 1) MONETARY FEE | | ⇄ ⇄ ⇄ ⇄ ⇄ ⇄ ⇄ | | | |
| | U.S. \$2.00 (or equivalent in mint stamps) | | | | |
| 2) STAMP FEE | | <i>Please specify quantity of circuits requested</i> | | | |
| | LARGE CIRCUITS <i>The fee for up to 4 Large Circuits is 100 Large stamps or \$5.00. The fee for up to 9 Large Circuits is 200 Large stamps or \$10.00.</i> | | | | |
| | SMALL/DEFINITIVE CIRCUITS <i>The fee for up to 4 Small/Def. Circuits is 100 small stamps or \$5.00. The fee for up to 9 Small Circuits is 200 small stamps or \$10.00.</i> | | | | |
| | CANCELLED TO ORDER (CTO) CIRCUITS <i>The fee for up to 4 CTO Circuits is 100 CTO stamps or \$5.00. (4 circuit maximum)</i> | | | | |
| | SUPER CIRCUITS <i>The fee for up to 4 Super Circuits is 200 large stamps or \$10.00. The fee for up to 9 Super Circuits is 400 large stamps or \$20.00.</i> | | | | |
| | USA CIRCUITS (USA stamps only) <i>The fee for up to 4 USA Circuits is 100 USA stamps or \$5.00. (4 circuit maximum)</i> | | | | |
| TOTALS: | | | | | |

¹This is the number of circuits (per type) you want to be on at the same time. USA/Canada circuits take approximately 1 month to circulate. International circuits take approximately 1½ months to circulate.

²Checks must be in US funds and should be made payable to ISWSC. Cash is sent at your own risk.

Overpayment of fees, if any, should be (check one): ☐ Donated to ISWSC ☐ Returned

Questions? Write to the address above or send an e-mail to rasmay4@frontiernet.net. THANK YOU!!

Jimbo's Farewell Column

by Jim Gaul (#1853)
Sales Circuit Manager

As you read this today the search is already on for a new sales circuit manager. I had announced back in January that I would no longer have the necessary time to devote to this position.

When I assumed this position back in August, 2000, I had all of the time in the world, being recently forced to retire because of the steel mill closing down where I had worked for over 30 years. But as you would expect, other things popped up over the years since then and now I have two lovely granddaughters — ages three and five — that need my attention along with a part-time job to supplement my pension.

I had emailed the Executive Director and our new President of this and the wheels are now in motion to find a replacement for me.

The duties of Sales Circuit Manager are not at all difficult to perform, just a little time consuming. A knowledge of computers and using Microsoft Excel spreadsheets and Access databases would be helpful.

I usually try to make up three circuits per week to go out to the buyers. One sales circuit consists of nine books sent to a maximum of five buyers. After the first buyer receives it and makes his or her purchases, a sales report is sent back to me and the circuit and mailed on to the next buyer on the routing sheet.

The length of time for the circuit making it's rounds in usually two months — unless, of course, someone exceeds the seven day time period allotted

for purchasing, which delays the circuit much longer. Once the last buyer has received and made his or her purchases, the circuit is then returned back to me for closing out. Hopefully everyone has marked his or her purchases in each book and noted this on the back of each book and correctly added their totals up.

That is just one aspect of this job. You also need to log in new sales books from sellers into the inventory and retire sales books that have been sent out three different times. I would estimate about fifteen to thirty hours a week would be needed to perform all of the above duties.

So, if this sounds like something you would like to take on and keep this valuable service to the membership going, please email, write, or call me. You can also contact either our new President, Joanne Berkowitz, who has been very helpful working with me, or our new Executive Director, Terry Myers.

Hope to hear from someone real soon as I plan to make a transfer of the inventory and records from these past five years to the new manager at StampShow 2006 if possible! This is the way I became manager back in August of 2000, at a major Stamp Show in Providence, Rhode Island. That is where I meet my predecessor, Bob McKenzie, who handed over the books and records and helped me through emails to resume his duties. I will also do this with the new manager when found, so it's important to be computer savvy!

Looking forward to helping out the new guy or gal!



Membership Contest

by Randy Smith (#1111)
ISWSC Past President

The membership contest announced in our previous newsletter continues! The contest is designed to reward the ISWSC member who sponsors the most new ISWSC applicants between now and May 1, 2006. The winner, who will be announced in a newsletter after the conclusion of the contest, will receive an assortment of worldwide stamps cataloging over \$250!

A reminder of "the rules":

- 1) The contest runs through April 30, 2006.
- 2) Membership applications are available via the ISWSC website or by contacting the Executive Director.
- 3) Only new applicants who are received as an ISWSC member by May 1, 2006 will count toward recruitment totals.

- 4) To get "credit" for a sponsorship, the new applicant must include the sponsor's membership number and/or name on their application.
 - 5) Renewals, reinstatements, and previous members rejoining the ISWSC will not count toward a sponsor's recruitment total.
 - 6) In the event of a tie, a drawing will be held to determine the winner.
 - 7) The members of the 2005 and/or 2006 ISWSC Board are not eligible for the prize.
 - 8) The ISWSC Board has the authority to determine additional rules as needed and its decision concerning the contest and its winner is final.
- Get your applications and sponsor several new members today!



Kilis Provisional Issue of 1921

by Richard Barnes (# 2425)

From the *Edmonton Stamp Club Bulletin*
(Volume 93, Number 2)

When political events are confused and usually violent, interesting things often happen in philately. Kilis is a town just over the border of Turkey on the road from Aleppo (Syria) to Gaziantep (formerly Ain-Tab, in Turkey). The French occupied Kilis in 1921 as part of the spoils of war they claimed. Turkish National Forces led by Ataturk resisted the French occupation. The French had inadequate resources and were hampered by atrocious mountain terrain as well as by Turkish resistance.

Necessity is the mother of invention. The French could not supply postage stamps for their occupation of Cilicia. The need was met in Kilis by local production of a single stamp, known as the Kilis provisional issue of 1921. The stamp is oblong, hand-stamped in lilac with the Turkish inscription (in the old Arabic script) "Kilis postage stamp," without either denomination or gum. Every source I have read agrees that this stamp sold for one piastre. Thus ends any agreement among experts, references, catalogues, etc.

The Kilis stamp is most commonly found with what will be referred to as pin perforated, pin pricked or sewing machine perforations. All rouletted copies are later forgeries made in Paris. Imperforate copies of the Kilis stamp can be either genuine or Parisian fakes. A good way to identify genuine Kilis stamps, imperf or pin pricked, is to look for the pencil lines. The paper was gridded into boxes using a pencil to provide a guide to where to stamp the paper and where to run the perforating sewing machine. One hand stamp impression was applied per box. Oh, yes, there have been experiments to duplicate the sewing machine 7 to 10 perfs. No modern reference that I have seen denies the use of a sewing machine to perforate genuine Kilis stamps.

The paper of genuine Kilis stamps is very thin and fragile, with a Kleenex-like feel. Kilis stamps on thicker paper that does not feel like Kleenex are Paris forgeries. Is this cigarette paper? It is not like present-day cigarette paper, but there is a good reason to support this idea.

Who manufactured this stamp? Early 1920-1930 articles speculated that the Kilis stamp was produced

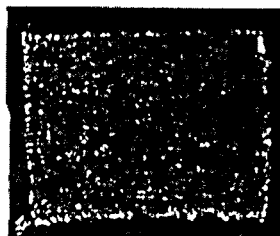
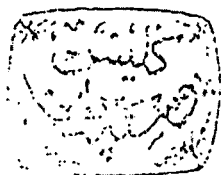
under the auspices of the Hashimite Syrian Arab Government. This attribution is now rejected because the French had ground out all the remnants of the Arab government in Damascus a year earlier. Also, there were few if any Arabs in this region in 1921.

It is doubtful if the French administration in the town initiated the production of this provisional stamp. The official name "Occupation Militaire Francaise" "(O.M.F.)" does not occur, though it was used on the stamps for Ain-Tab issued 40 km. to the north. I have no document or expert taking this position.

Most publications and catalogues of Turkish stamps for the period of the Turkish War of Independence (1921-23) include the Kilis stamp issue. Their contention is that Turkish inhabitants of Kilis — with the concurrence of the Turkish Nationalists — went to the local and pragmatic French post master and received his permission to manufacture and use these stamps within the French postal system. This is the explanation of the late Gary Paiste, the acknowledged expert on the Kilis issue.

The Scott catalogue places the Kilis stamp in the country of Syria (#91). I agree with this placement in the catalogue. Scott mentions Armenians in Kilis in a note, but I don't know what information this is based upon. There were many Christian Armenians in the area who welcomed the French as liberators. Historically, the Armenians had been extensively involved in the tobacco trade. In a time of chaotic communications, a tobacco merchant might have an available supply of cigarette paper. An Armenian merchant would also have had access to the French administration and its post master.

All covers with the Kilis stamp on them referred to by Paiste and Mayo were written by Armenians and went south through the French postal system in Grand Lebanon. From 1922 onwards, all mail used Turkish stamps and went through the Turkish postal system. No covers with the Kilis stamp are recorded after December 1921. I would have thought that if this stamp was of Turkish origin, it would have gone through the Turkish postal system during a transitional period. I feel the Armenian/French connection is the probable origin for the Kilis provisional stamp of 1921.



Whatzit?

by Richard Barnes (# 2425)
Whatzit? Coordinator

Purchasers of Packets and Topicals are coming across the stamps of the Western Sahara. Most philatelists are familiar with the various historical Spanish colonial administrations in the Western Sahara between 1886 and 1976 as recorded on the stamps of Spanish Western Sahara, Spanish West Africa, Ifini, Rio de Oro and La Agueria. On today's maps this area of northwest Africa is marked out as the Western Sahara (fig. 1).

Following the death of Spain's dictator General Francisco Franco, the government of King Juan Carlos I moved to divest Spain of its African colonial liabilities. In 1976 Spain withdrew from most of its African territories. Under UN auspices a compromise was reached dividing the Western Sahara between Morocco and Mauritania.

Mauritania is the poorest country in Africa. When wily old King Hassan II of Morocco sent unarmed Moroccan settlers over the border to occupy the southern half of Western Sahara, Mauritania could only object. The world press missed the nonviolent event. Mauritanian pride was hurt. Algerian foreign policy conflicted with the more moderate policies of King Hassan as much as the possibility of the Sahara oil fields extending beyond Algeria into this region. Mauritanian complicity, Muslim fundamentalism in conjunction with Algerian arms, safe havens and some money supported the rise of the Polisario Liberation Front, a movement of resistance to Moroccan rule in Western Sahara.

The popular press has credited the printing of stamps as a source of money and a visual representation to the world of the resistance in Western Sahara (Fig.2).

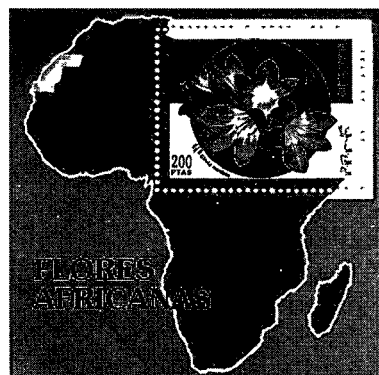


Fig. 6



Fig. 2 & 3

1997 the name changed to Saharawi Arab Democratic Republic (Fig. 3). These fine quality stamps that are actually labels cover all kinds of topicals; birds, planes, flowers, sports, animals, etc., so they will sell in hard currency parts of the world.

The easiest available source for more information on the Saharawi Arab Democratic Republic including a good map see <http://www.arso.org/index.htm>.

I must express the pleasure that I received from the notes of members identifying Fig. 2 in the Nov/Dec 2005 *Circuit* (Vol. 23, No. 6, page 8). This paragraph is a synopsis of all the member research. At the end of WWII the Russian Army occupied the eastern section of Germany. They did not set up a civilian mail system under the Russian Occupation (in contrast to the Allied Zones). Individual German States under Russian Occupation therefor had to set up their own local postal system for the years 1945-1946.

The consensus is that this stamp is from East Saxony, Scott (b.o.b. East Germany) #15N2. This stamp is a recent addition to Scott catalogues. It is also found in other common catalogues; Michel German catalogues lists it as East Saxony #51 and Minkus as Germany S16. Michel states that 7,053,100 were printed in 8 varieties depending on paper (3 paper types), gum (2 types used), and the appearance of the number 3 (2 types). This stamp is the more common type 1 with the top line of the 3 pointed. This and similar issues from the East Zone were either sold in bulk to dealers or forged widely. To denote how times change Rick Simpson ended his note by saying "They appeared frequently in cheap packets when I started collecting in the 1950s."

So far no one has submitted a stamp for identification by myself and members reading Whatzit. I cannot believe that I am the only one that keeps a glassine for unidentified stamps sitting on a desk shelf. There a lot of knowledge spread out among members. Tap into it. Please contact me with your Whatzits. I am available at:

Richard T. Barnes

11715 - 123rd St

Edmonton, AB T5M 0G8

CANADA

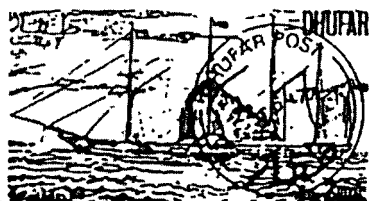
Or via e-mail at barnes@interbaun.com



Dhufar

Continued from page 6

incursions into Dhufar. Chinese support was short-lived. Egypt was the main intervenor in the struggle between the three different Yemens. I suspect that the PFLOAG's political doctrine ran counter to Nasserism. Another factor may have been that the People's Democratic Republic of Yemen could no longer support the PFLOAG because of their own needs in the struggle to unify Yemen.



By 1971, the PFLOAG felt that they needed their own stamps. Contemporary reports suggest that a German promoter is responsible for the stamps of Dhufar. I personally doubt this because Michel does not list these stamps. No catalogue lists these stamps. Is there anyone out there who would like to help me with this project?



I believe the first issue of eight stamps was intended to have a postal use as well as being a revenue source. The rapid change in the fortunes of the

PFLOAG negated the need for stamps. By 1972, topical stamps with only a financial purpose were being distributed in philatelic markets. I do not have any information on the promoters of these stamps other than that it appears that they were not the same people involved in producing stamps for the Trucial States, Ajman, etc.

The stamps of Dhufar were not produced in large quantities, nor did they produce as many stamp issues as did many of the other "states" listed in Scott. Dhufar had a long philatelic life for a non-existent state. Its stamps continued to be produced at least until 1984, which is long after the PFLOAG was a factor in Dhufar.



2R
Dhufar

This stamp set was sold in 1984.



Membership Update

New Members

#2481 Joel Grebin (exp 1/31/2007)
16 Audubon Way
Flagler Beach FL 32136-4300
joelgrebin@yahoo.com
A,G

Address Changes/Corrections

#2154 Koller
844 NE 73rd Ave
Hillsboro OR 97124 — USA

#102-D Schloss
1522 W. Norwood St.
Chicago IL 60660 — USA

#648 Weller
P O Box 974
Roseburg OR 97470 — USA

#18 Hasse
3435 Fairfax St., Apt.10
Eau Claire WI 54701-5817

#1533 Haring
2 Maryland Circle, Apt 246
Whitehall PA 18052

#2465 Onstott
2529 Elkcam Blvd.
Port Charlotte FL 33952

#72 Guethlein
1315 E. Woodlawn Rd., #428
Charlotte NC 28209

#1658 Udeh
543 West 14th Place
Chicago Heights IL 60411

#2473 Akpan
Suite 332, Nicon Hilton Hotel
Abuja, NIGERIA

New/Changed Email Addresses

| | |
|-----------------------|-------------------------|
| #2425 Barnes | Barnes@interbaun.com |
| #102-D Schloss | 1stsgt33@megsinet.net |
| #669 Roderick | joantr8896@peoplepc.com |
| #1246 Baumert | jhbaumert@sbcglobal.net |
| #409 Bonvallet | bonvalk@nationwide.com |

Returned Mail/Unknown Address

#1741 Wright
#1434 Howell

Dropped

Dues Expired November 30, 2005

#1463 Enabulele
#2366 Titley
#2371 Garcelon
#2375 Kampert
#2441 Kachmark
#2443 Schroen

ADVERTISING

Classified Rates Per Insertion

First 30 words, including name, address, and ZIP code are \$3. Additional words are 20 for \$1. NOTE: State abbreviations = one word; P.O. Box 1234 = 2 words; ZIP code = one word. make all checks payable to ISWSC in U.S. funds. Send text and payment for ads to the Editor (address on page 2).

EXPAND YOUR HORIZONS. Bargain offers of worldwide stamps, blocks, se-tenants, covers, postcards – and much more. www.chadneighbor.blogspot.com or Chad Neighbor (ISWSC #510), 28 Relugas Pl., Edinburgh EH9 2PY SCOTLAND. [5-6/06]

HAVING TROUBLE finding newer used and those elusive common stamps? Free lists. Darrell L. George (ISWSC #635), 19410 Cantrell Road, Little Rock, AR 72223-4422. [1-2/07]

100,000 DIFFERENT WORLDWIDE SETS Available! (mostly mint and complete) Best personal approval service, discounts, bonuses and specials. Walter (ISWSC #477), POB 1466C, South Bend, IN 46634. [9-10/06]

JOHN KNUDSEN'S STAMP AUCTIONS: <http://www.stamphead.com/adsearch.php?seller=johnsim03>. (ISWSC #2448 & APS #145467) [3-4/06]

OFFER NO. 1 — APPROVALS: Good quality world used stamps for sale in packet approvals (not the common stamps). The price per stamp is US 10¢ each postpaid. Try one approval 200 stamp mixture.

OFFER NO. 2 — MALTA STAMPS: 100 different used recent stamps. Includes high values and sets.. The price is US \$10 cash, postpaid. Please contact Joseph Farrugia (ISWSC #690), "Biancaville" Phillip Farrugia Street, Zurrieq ZRQ-05 MALTA. [3-4/06]

APPROVALS

25% of Scott – identified and priced almost all \$1 and over. Desirable countries OR choose Australia and states, Great Britain or Germany and states all high values \$100 Scott \$12. ALL or almost all faulty, heavy cancels etc. Or order as approvals 15%. Approval packs; grab bag no faulty, take any stamp 10¢ plenty high values.

TRADES: Send \$50 to \$100 all over \$1 – I will return same plus 5%

A.L. (ISWSC #2100)

1314 Fulton • San Antonio, TX 78201

[3-4/06]

BREAKING UP 59-YEAR ACCUMULATION. Let me send you a stuffed envelope of old, new, mint and used, etc. Pick what you want at 1/3 SCV and return the balance. Gelfman (ISWSC #1849), Box 315, Old Bethpage, NY 11804 USA. [3-4/06]

Election Results

The 2005 ISWSC Elections are now complete. The following are the official voting results:

- **President: Joanne Berkowitz (#98) – 163**
- **Secretary: Allesandro Artini (#2451) – 161**
Regi Ausmus (#2369) – 1 (write-in)
- **Vice President of Charitable Services**
Richard Rizzo (#2215) – 161
- **Vice President of Public Relations**
John Seidl (#1646) – 111
Regi Ausmus (#2369) – 52

Congratulations to those elected and thank you to all who expressed interest in the positions. A special thank you also to **Tony Zollo (#856)**, **Tom Fortunato (#379)**, and **Dalene Thomas (#101)** who have now completed their service on the ISWSC Board.



Where to Send What

Membership Renewals, Applications, Changes in Mailing Address, Roster Changes, Etc:

Terry Myers (#736)
PMB 210
3308 Preston Road, Suite 350
Plano, TX 75903 – USA
TMyers6497@aol.com

Annual 250 Stamp Donations:

Richard Rizzo (#2215)
18300 Winter Park Court
Gaithersburg, MD 20879-4626 – USA
poly76ce@netscape.net

Payments for Advertisements:

Jennifer Arnold
2390 Willow Street, Lebanon OR 97355-3064
Ph: 541-990-9686; Fax: 541-259-4658
pizzazz@cmug.com

Auction Bids & Lots and Payments:

Everett King (#1389)
P.O. Box 130, Whitethorn CA 94586
stamps@whitethorn.com

Text for Articles for The Circuit, Corrections for Articles: Send to Jennifer Arnold (see above) via USPS, fax or email. When emailing graphics for publication, please use a higher resolution (150 dpi). Please contact the Editor if you have any questions about format.